

# CC Zirconias

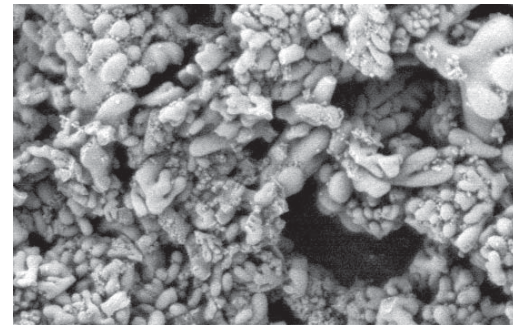
TECHNICAL DATA SHEET

- Monoclinic zirconium oxides.
- Ideally suited to the production of ceramic pigments.
- Particle sizes adapted to different applications and processes.

## TYPICAL CHEMICAL ANALYSIS (%)

	ZrO <sub>2</sub> +HfO <sub>2</sub> *	SiO <sub>2</sub>	Na <sub>2</sub> O	TiO <sub>2</sub>	Fe <sub>2</sub> O <sub>3</sub>	Al <sub>2</sub> O <sub>3</sub>	CaO	H <sub>2</sub> O	L.O.I.
	(105°C) (105 - 1000°C)								
<b>CC10</b>	98.8	0.5	0.2	0.1	0.04	0.1	0.03	0.1	0.2
<b>CC05</b>	98.8	0.5	0.2	0.1	0.04	0.1	0.03	0.1	0.2
<b>CC02</b>	98.8	0.5	0.2	0.1	0.04	0.1	0.03	0.2	0.2
<b>CC01</b>	98.8	0.5	0.2	0.1	0.04	0.1	0.03	0.2	0.2

\* by difference



## PARTICLE SIZE & SPECIFIC SURFACE AREA

	CC10	CC05	CC02	CC01
D90 (µm)	8.0	3.2	2.0	1.5
D50 (µm)	3.5	1.7	0.9	0.7
D10 (µm)	1.0	0.7	0.5	0.4
SSA (m <sup>2</sup> /g)	2.7	3.1	4.7	6.0

Analytical method:

- Specific surface area by B.E.T.

- Particle size distribution by Sedigraph 5100

## MAIN APPLICATIONS

- Ceramic pigments and colours
- Thermal barriers
- Polishing agents
- Foundry coatings
- Foundry filters
- Specialty glasses

*Saint-Gobain ZirPro is the expert in zirconia-based materials for industrial applications. From our global network of manufacturing, commercial and research facilities, we serve leading customers through long-term and trust-based relationships.*

**CRYSTAL STRUCTURE** ————— 100% Monoclinic

**SAFETY DATA SHEET AVAILABLE**

## PACKAGING

25 kg moisture proof paper bags.

500 kg, 1 Mt big-bags.

SEPR Saint-Gobain ZirPro  
B.P. 60025 - 84131 Le Pontet Cedex  
France

Tel.: +33 (0)4 90 32 70 71  
Fax: +33 (0)4 90 32 70 61  
e-mail: zirpro@saint-gobain.com

<http://www.zirpro.com>